

Resource Center and Office Hours
Monday - Thursday - 10AM - 5 PM
Friday 10 AM - 2 PM

Resource Center

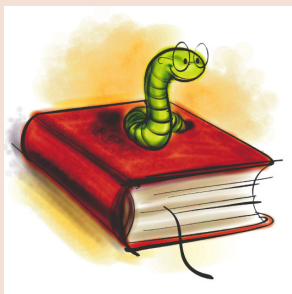
New and Used Homeschool Books

Abeka, SAXON, Konos,
Christian Liberty, Math-U-
See, Keys to ..., Apologia,
Critical Thinking, Sonlight,
Weaver, Alpha-Omega,
Horizons.

We are distributors for
Saxon, Alpha-Omega,
Christian Liberty Press, SC
History, Landmark Free-
dom Baptist Curriculum,
GNLD, Legal Services and
more!!

***We buy used Saxon,
Abeka, and others.***

Visit web site for directions
and more information:
www.gracehsa.org



Grace Home School Association reserves the right to review, suspend, or terminate membership for Members failing to adhere to and follow the minimum requirements set by Grace Home School Association and those of 59-65-47 or any other reason Grace Home School Association may deem applicable. Governing authorities will be notified, if necessary.



Grace group membership
number for
Home School Legal Defense
Association is **299324**

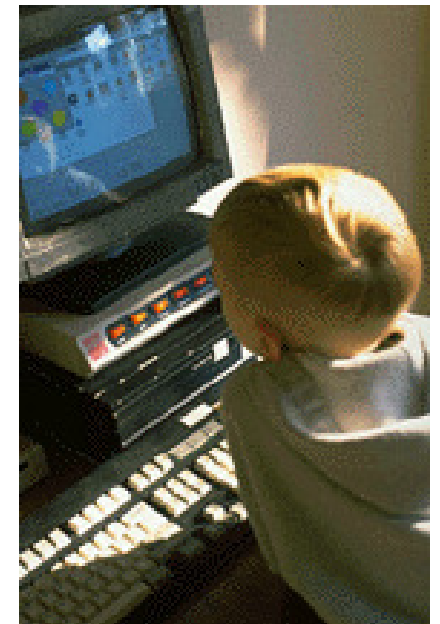


PO Box 12672
Florence, SC 29504
137B S. McQueen Street
Florence, SC 29501

Phone: 843-667-9777
Fax: 843-667-8833
E-mail: grace@gracehsa.org
www.gracehsa.org

***We are here
for YOU!***

Grace Home School Association



Tel: 843-667-9777

The purpose of Grace Home School Association is to offer an option, as stated in the SC Code of Laws (59-65-47), to those who desire to educate their children unencumbered by unnecessary restrictions, requirements, and expense.

Grace is a legal, alternate source of approval for home schooling parents in SC and across the United States and other countries.

Established in 1990 as an organization to coordinate and establish academic standards and to provide support services for home schools and private schools, Grace has earned an outstanding reputation among accountability associations.

We believe it is a constitutional right and a command by God to be responsible for the education of your children. (Deut. 6:6,7; 1 Tim. 3:15.)

We want your children's education to be a positive experience for both parent and child. Our goal is for you and your children to be successful. We are here for support, encouragement, accountability, and advice.

Benefits of Membership

- Legal establishment of your home school.
- Testing not required.
- No daily time requirements, flexibility in determining school calendar.
- Membership pack with Certification of Membership, Permanent Record Form for each student (for your use), and an Attendance Form to return to Grace.



- Friendly personal office staff prepared to answer your questions during regular office hours, in person, via phone or email.
- Heartwarming graduation ceremony (diplomas and other graduation items available too).
- GRACE Plus is available for those wanting more accountability and recordkeeping service. Annual cost for this service is:

Grades K-8 \$40
Grades 9-12 \$60

- Transcript service available for high school students and one-time transcripts available for students returning to conventional schools.
- Letters to DMV, tech schools, colleges as required.
- Legislative information.
- Verifications of homeschooling to DSS, DJJ, IRS, SSA, military, and others as requested.
- Bookstore to buy and sell curricula.

We are here for YOU!

Grace School Association is governed by a Board of Directors.

To become and remain a GRACE member, you must do the following:

◆ Complete the form in the application package or renewal.

◆ Be the parent or legal guardian of the child(ren) being taught.

◆

◆ Must have high school diploma or GED.

◆ Have a 180 day school year.

◆ Plan and purchase an appropriate course of study for each student in the core subjects of reading, writing, mathematics, science, and social studies, and in grades seven through twelve, composition and literature;

◆ Remit annual membership dues \$75.00 per year per family, check, money order, Visa, MasterCard, or American Express, \$35.00 if kindergarten only.

◆ Maintain educational records (as prescribed by law) including:

- A plan book, diary, or other record indicating subjects taught and activities engaged in,
- A portfolio of samples of the student's academic work;
- A semiannual progress report including attendance records and individualized documentation of the student's academic progress in each of the basic instructional areas.
- Documentation of the student's academic progress in each of the basic instructional areas specified above.
- Submit attendance record and high school records annually.
- All memberships expire on June 30.

'Senior Policy: A late fee of \$25 is required for all seniors joining GRACE after September 30. Seniors will not be accepted after January 31 of their graduation year.